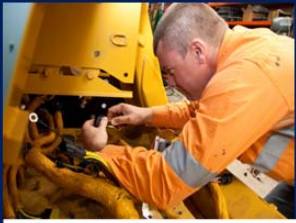




## Employee Overview



*“Technical Excellence and Superior Service Supported by Hands on Experience”*



# Mission Statement

## Our Vision

To be the largest specialist technical solution provider within our area of expertise to the mining, resource and industrial sectors.

## Our Values

Focus on the customer requirements.

Provide the most up to date technical solutions that are supported by the on ground expertise of our people.

Ensure that efficiency and environmental impacts are considered in our business and customer solutions.  
To safely, efficiently and cost effectively provide the highest standard of workmanship to our customers, on time.

## Our Basic Principles

Lead by example.

Take the initiative to make things better.

Focus on what is good for the business, the team and the wellbeing of the individual.

Promote team effort while maintaining the confidence and esteem of others.

Invite opinion, earn respect and learn from the knowledge of others.

Develop and promote constructive relationships with a bias of good will.

# The Southern Cross Group

From its humble beginnings as a one man operation in 2004, Southern Cross has grown to become Australia's largest specialist technical solution provider within the Auto Electrical repairs, Parts and On-site servicing to the mining, resource and industrial sectors, now fully supported by over 90 highly qualified team members.

In recent years the Southern Cross Group has grown rapidly to meet the specialist requirements of the mining and resource sectors and now has diversified business units that include:

- **Southern Cross Auto Electrics**
- **Southern Cross Wholesale Auto Electrical Parts.**
- **Southern Cross Technical Services**
- **Southern Cross Mine Maintenance & Labour Hire.**
- **Southern Cross Commercial Lighting.**

The Southern Cross Group is owned and operated by a mix of management and experienced tradesmen who have worked "on the ground" in the Mining and Resource industry. The experience gained over many years working with most major heavy equipment OEM's and mining companies, is the core underpinning and strength that enables an understanding and appreciation of what is required by the industry to operate effectively.

- **Quality of Work.**
- **Quality of our People**
- **Hands on Experience.**
- **Knowledge of the Industry.**
- **Dedication to Deliver.**

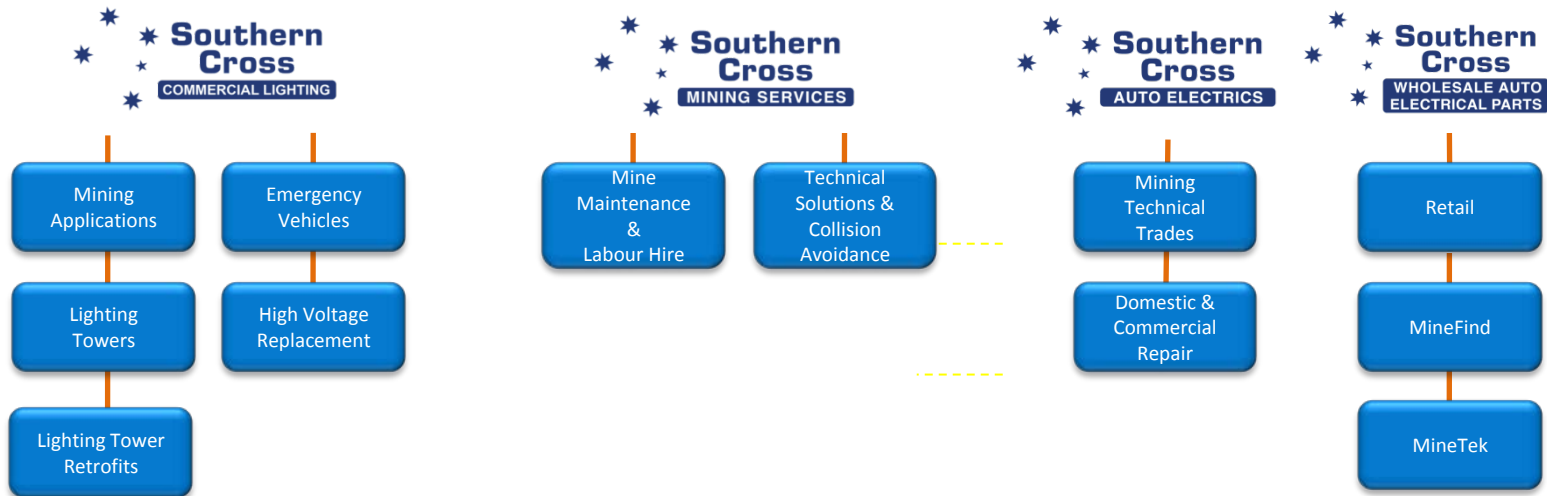
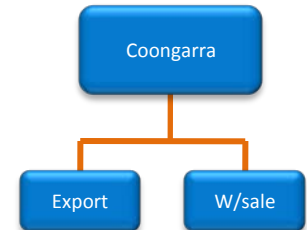


*"Technical Excellence and Superior Service Supported by Hands on Experience"*

# Company Structure

*“Building a strong foundation in support of our customers”*

Southern Cross



*“Technical Excellence and Superior Service Supported by Hands on Experience”*

# Management Team

*“Our People and Our Knowledge is the Key Underpinning of Our Success”*

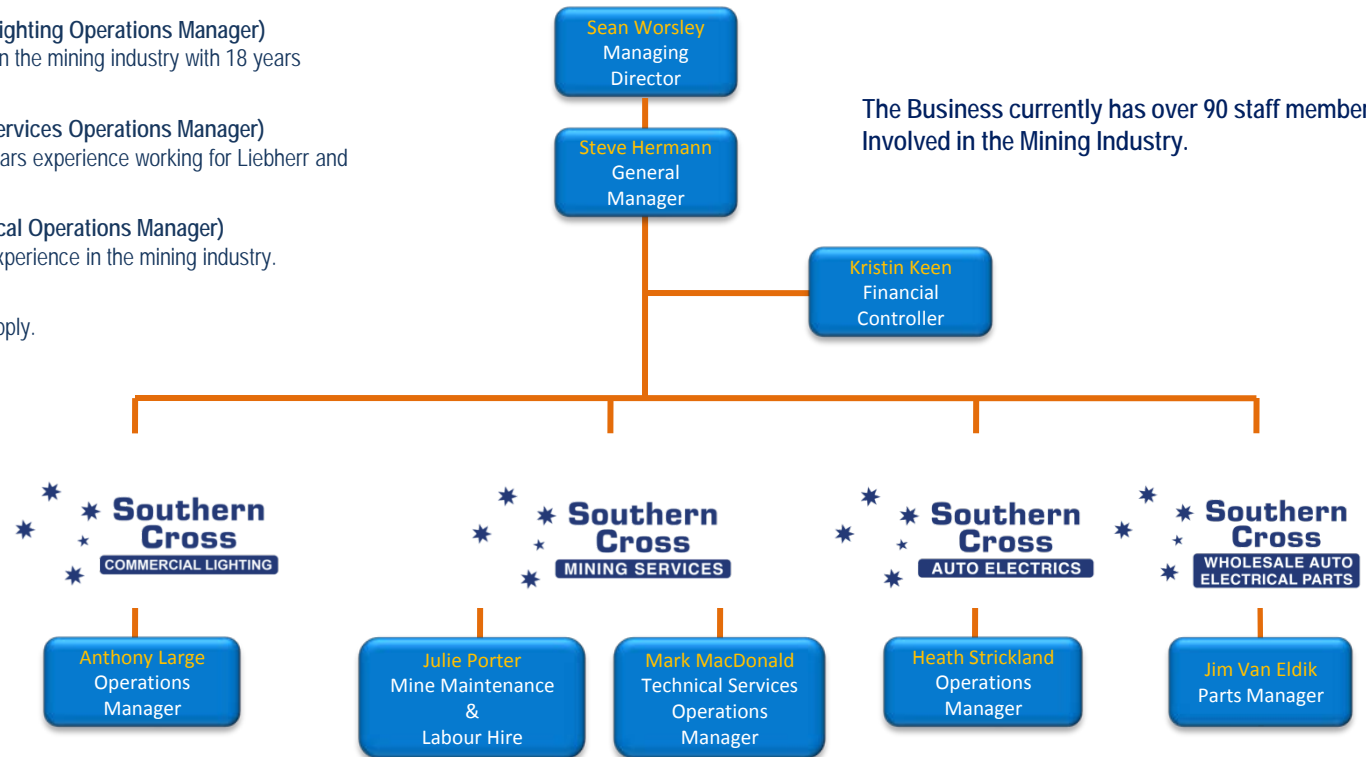
The Experience:

- **Sean Worsley (Managing Director)**  
20 years experience as an Auto Electrician and Business Owner involved in the mining industry..
- **Steve Hermann (General Manager)**  
Auto Electrician with 20 years experience in Corporate management..
- **Kristin Keen (Financial Controller)**  
20 years in Accounting and Finance.
- **Anthony Large (Commercial Lighting Operations Manager)**  
Fitter with 20 years experience in the mining industry with 18 years experience employed by BMA.
- **Mark MacDonald (Technical Services Operations Manager)**  
Auto Electrician with over 20 years experience working for Liebherr and within the mining industry.
- **Heath Strickland (Auto Electrical Operations Manager)**  
Auto Electrician with 15 years experience in the mining industry.
- **Jim Van Eldik (Parts Manager)**  
24 years experience in parts supply.



- **Phil Goulding (Sales Manager)**  
30 years experience as a Boilermaker and Business Owner involved in the mining industry.
- **Julie Porter (Mine Maintenance & Labour Hire Operations Manager)**  
15 years experience involved in HR and Labour Hire within the mining industry.

The Business currently has over 90 staff members Involved in the Mining Industry.



*“Technical Excellence and Superior Service Supported by Hands on Experience”*

Southern Cross



# Auto Electrical

The Southern Cross Auto Electrical team has unparalleled experience in providing auto electrical services to the mining and resource industries throughout the region utilising a fully equipped fleet of service vehicles. Each service unit carries an extensive range of auto electrical and air conditioning service parts and operates 24 hours a day 7 days a week.

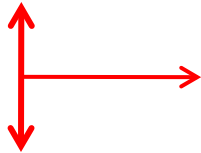
The service teams specialise in repairs, maintenance and servicing to the mining and resource industries, while also providing the same level of attention to earthmoving, farming and other heavy industrial sectors. These services can be provided in our workshop or on-site with a focus on minimising downtime.

All technical personnel have the training, inductions and accreditations to visit any location within the district and while in support of the Groups other technical business units, can be stationed anywhere in Australia.

## Our services:

- Electrical/Electronic diagnosis and repair.
- Air Conditioning diagnosis and repairs.
- On-site breakdown service for all heavy equipment and machinery.
- Machine re-wires and builds.
- Harness making for all OEM equipment.
- Manufacture of isolation and junction boxes.
- Preventative maintenance.

Field Service



Workshop



*“Technical Excellence and Superior Service Supported by Hands on Experience”*

# Technical Services

Southern Cross Technical Services has an unparalleled level of experience in supplying specialist services to the mining and resource industries. Supported by all other Southern Cross business units, Southern Cross Technical Services brings together a diverse range of expertise and knowledge, while providing cutting edge safety and efficiency solutions designed specifically for the mining and resource sector.

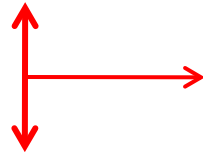
Expertise in LED lighting, Collision Avoidance/Proximity Detection and Fleet Management Systems are at the forefront of technical solutions supported by highly qualified and experienced tradesmen. The Southern Cross Technical Services team have experience working on all major OEM machines including Caterpillar, Komatsu, Hitachi, Terex and Liebherr.

Specialist Industrial Rewiring teams have the ability to efficiently and cost effectively complete even the largest assignments such as drilling rigs and high value earthmoving equipment.

## Our services:

- Collision Avoidance/Proximity Detection.
- Pit Pump Cameras and Isolation Solutions.
- GPS Fleet management systems.
- Labour Hire of Auto Electricians, Diesel Fitters, Boilermakers and High Voltage Electricians.
- Project Management.
- Digger Crews

## Specialist Teams



## Field Service



*“Technical Excellence and Superior Service Supported by Hands on Experience”*

# Mine Maintenance & Labour Hire

Southern Cross Mine Maintenance and Labour Hire is committed to providing tradespeople that are adaptable, highly skilled and importantly, understand our client's expectations. This fresh and qualified approach to labour hire and maintenance services in the mining and construction industries, ensures that our customers receive the highest levels of support, while receiving the very best trades personnel that the industry has to offer.

Through the development of internal business systems and processes, we endeavour to minimise waste, be environmentally responsible and take a proactive approach to our client's environmental obligations. We remain dedicated to maintaining the highest business principals, ethical standards and a transparent approach to the health and safety of all our employees.

**Southern Cross Mine Maintenance offers the following services (but is not exclusive to):**

**CHPP Maintenance** - Boilermakers, Mechanical Fitters, Trade Assistance, Electrical services and Logistics, conveyor maintenance and installations.

**Field Maintenance** - Bucket Repairs, Boom Welding, RD Tray Refurbishments, EXD Boom repairs.

**Heavy Diesel Fitters** - All mobile and fixed plant including Diggers, Rear Dump, Graders etc.

**WHSO (OH&S) Consultancy** including audits, accident investigation, HSEMS development.

**Boom Welding** - GM9 and GM4 BE boom welding.

**Site Logistics** including Access equipment, site vehicles, Boilermaker trailers and trucks, Fitters trailers, Site skids, office/Tool stores etc.

**Workshop** - light to medium fabrication including crusher recovery projects, vehicle servicing and repairs.

**Secretarial Services** - Data entry, Filing, site clerk functions, word processing, spreadsheets et.



*"Technical Excellence and Superior Service Supported by Hands on Experience"*



# Commercial Lighting

The Southern Cross Commercial Lighting business unit is focused on delivering the latest lighting technology for the Oil & Gas, Mining and Industrial sectors. New advancements in LED technology now enable safer more efficient modes of equipment and stationary lighting.

Utilising the latest low voltage LED technology that replaces high voltage Metal Halide lighting, the Southern Cross Commercial Lighting team can work with design engineers to provide the correct lighting footprint for large moving capital equipment, stationary equipment and building infrastructure.

The flexible nature of the Southern Cross LED lighting systems also provides a platform for the replacement of existing HID and halogen lighting on heavy earthmoving equipment and other major OEM capital equipment. Supported by a team of “on-site” experienced trade personnel, the Commercial lighting team assist in providing the optimal solution for any lighting situation.

## Key Points:

- Safety/Risk – Utilising low voltage LED.
- Substantial fuel savings in lighting plant equipment.
- Light life exceeding 50,000 hours.
- Immediate start up – Limited production down time.
- Directional light limiting peripheral glare.
- 1 to 5 replacement of HID and halogen lighting in some applications.
- Can be used in – Mobile lighting towers, earthmoving and large equipment, stationary high voltage worksite lighting.



*“Technical Excellence and Superior Service Supported by Hands on Experience”*

# Commercial Lighting

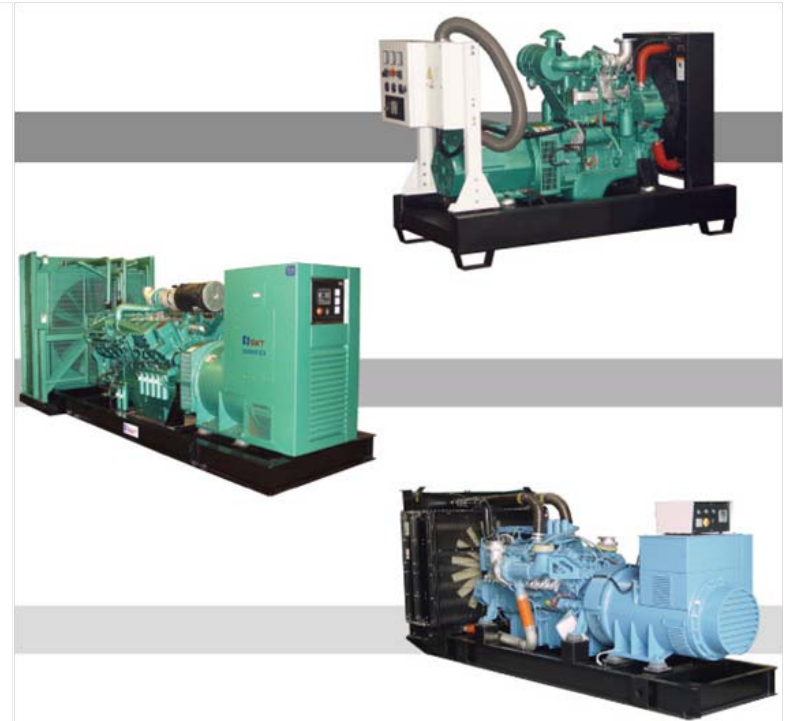
## High Voltage Lighting Towers

The high voltage lighting tower range includes 4 series KL, TL, VL and GL. The KL series lighting tower is the most powerful and offers the most light options. The TL series tower has 3 operational modes, manual, electrical and hydraulic. The VL series is the latest design that comes with a vertical mast and the GL series tower is being developed with a mast of up to 18m when fully extended.



## Open Type Gensets

The Open type gensets are equipped with OEM engines such as Perkins, MTU, Yanmar, Cummins and Stamford. The overall design includes built in shock dampening units to decrease motion, and the reliable and stable control system enables the genset to function in a more stable, effective and safe manner.



*“Technical Excellence and Superior Service Supported by Hands on Experience”*

# Commercial Lighting

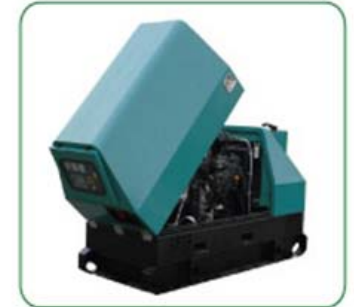
## Silent Type Gensets

The silent type gensets are able to work in a harsh environment with a specially designed canopy, which is designed to be leak and dust proof and is produced with an anti-rust surface. The design of these units helps to limit vibration and noise while controlling emissions more effectively.



## Project Gensets

The manufacturer of the project gensets has had over two decades of experience and has won much praise from customers in the areas of construction and mining with distribution in over 100 countries. These gensets come in 4 categories: standard, super silent, container genset and welding generator.



## Welding Genset

The welding genset is highly efficient and can generate power at the same time as welding.

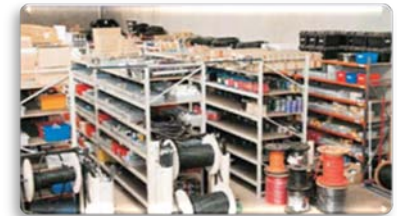
- Direct current welding power.
- Cont and adjustable current.
- Wide range of current settings.
- Three phase or single phase power supply.

# Wholesale Parts

Southern Cross Wholesale Parts was established with the aim of sourcing and supplying high quality, cost effective auto electrical parts predominantly to the mining, earthmoving, construction and farming equipment sectors. The southern Cross wholesale Parts division is supported by the knowledge and technical ability of the large field service teams working throughout the region.

It is this technical knowledge and the “on-site” ability, that supports all part sales which makes the difference to our valued customers. Southern Cross is the sole distributor of the SX and Bright Knight brands, including the latest LED lighting technology.

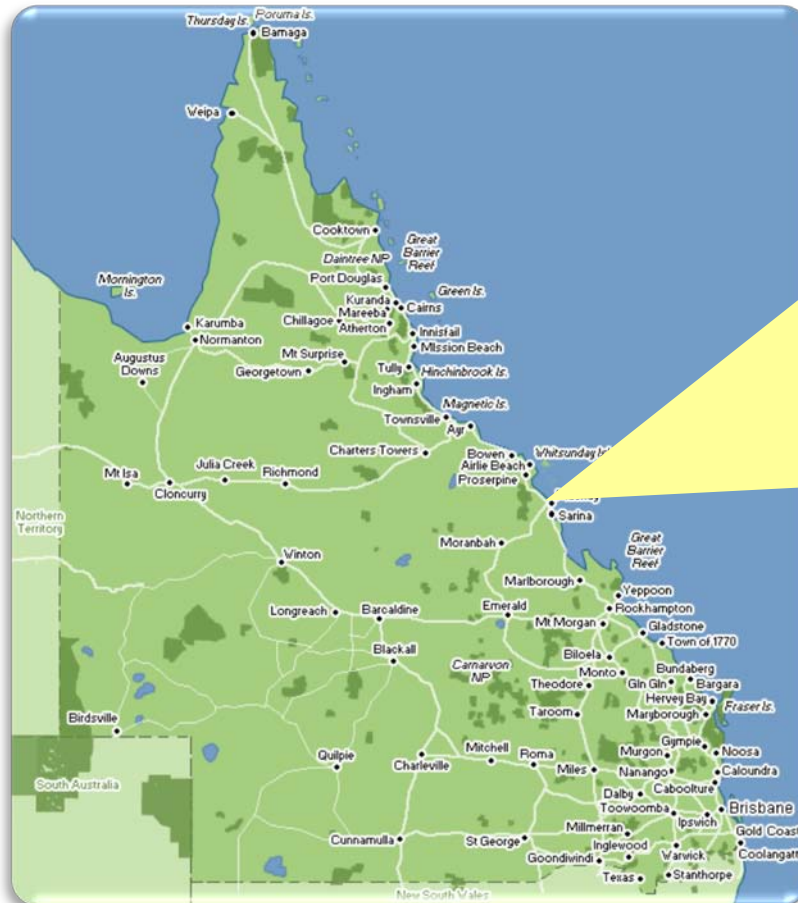
The Wholesale Parts division also supplies all other major brands such as Delco Remy, Prestolite, Britax, Hella, Narva and many other well recognised brands. We understand the importance of safety to our customers and we supply numerous products and services that assist in managing safety including the Preview Collision Avoidance systems and integrated Pit Pump Cameras.



*“Technical Excellence and Superior Service Supported by Hands on Experience”*

# The Mackay Whitsunday Region

Halfway between Brisbane and Cairns, the relaxed tropical city of Mackay is close to pristine beaches and the gateway to the Whitsunday Islands. Mackay is Queensland's premier coal region, producing 50 per cent of the state's coal. The Mackay Whitsunday region can boast an average of 274 sunny days a year, maximum temperature of 33 degrees Celsius, and minimum temperature of 10 degrees Celsius.



***“Technical Excellence and Superior Service Supported by Hands on Experience”***

# Relocating to Mackay

The Mackay Region comprises the City of Mackay, north to Midge Point, south to St Lawrence and west to Clermont with an area encompassing in excess of 90,000 square kilometres comprising of beaches, islands, hinterlands, gorges, mountains and lowlands. Isaac Regional Council now encompasses the three former shires being Belyando, Broadsound and Nebo. The Isaac Regional Council covers an area from "Coal to the Coast" in Central Queensland, incorporating the towns of Clermont, Dysart, Glenden, Middlemount, Moranbah, Nebo, Coppabella, St Lawrence, Carmila, Clairview, Greenhill and Ilbilbie.

The region as a whole, is home to 143,000 friendly and welcoming people and the relaxed tropical city of Mackay has a population in excess of 80,000. It is no wonder the region can offer such an abundant range of services and facilities. Our vibrant developing community can proudly boast being a City where people can pursue a wide range of interests and lifestyles in a secure environment.

The diversity of the region spreads beyond primary industries alone, a maturing and developing tourism industry is a large economic driver, with over 1/2 million domestic visitors to the region each year.

Mackay Region's weather is one of its' top attractions. Summers consist of warm to hot tropical weather (December to March expect humidity), while the remainder of the year provides invariably blue skies, sunshine and cool nights.

Why not come and live in this gorgeous climate that Mackay can offer all year round!

For more information we have included a contact list with this presentation or go to the web site below:

<http://www.mackayregion.com/more-information/relocation-to-mackay.cfm>



## Be a part of the Southern Cross Team

### What we are about

Quality work, with quality parts ie stainless boxes, tinned wire, the actual quality of the work and the way we go about it. The high standard to which work is completed, no low quality work no shortcuts , everything done properly once.

Quality customers ie OEM companies Hitachi, komatsu, Hastings, Atlas Copco, BMA, Rio Tinto etc working on new machine builds, machine refurbishments, new machine modifications.

### The flexibility

The ability to work in field service going to different sites with the opportunity of working on all types of machinery, carrying out air-conditioning repairs or machine refurbishments, rewires, install's, troubleshooting, breakdowns. Or go into a roster situation staying located at one site where you become familiar with a certain type of machinery and a certain company, but still be able to do more work on days off if you want to, by helping the field service team in the field.

Rosters don't have to be a permanent thing, so if after a period of time if you would like change, then we can relocate you to another site on roster or into the field service team. Our professionalism and flexibility make us an employer of choice.

### Our equipment

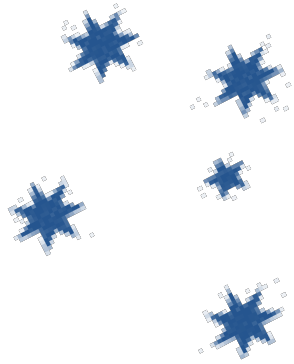
- Modern fully maintained vehicle fleet, fully equipped with air conditioning tooling and fully stocked with repair parts.
- All trade technicians are fully supported in the field by the head office technical support teams.
- We have our own fully stocked warehouse supporting all field staff.
- Separate person within the parts business that specifically looks after all field service parts requirements shipped direct to site.
- All work loads and job allocations handled by an in house operations team providing efficiency and planning for all trade technicians.
- Modern workshop providing support to our local customers while providing a technical library for field support personnel.

### What is on offer

- The highest rates of pay in the industry.
- The provision for accommodation while working on roster or out in the field.
- The ability to provide short term accommodation in the initial stages while settling in Mackay. (We are a business that supports families and their wellbeing).
- The ability to provide a FIFO in certain situations.
- The flexibility and opportunity on staff or work as a sub contractor. (either way you will still be a part of a close knit team)

The opportunity to work in an environment where your contribution within the team is important and where you are looked after by genuine quality people !!





# Thank You for Your Time

From

# Southern Cross

The Specialist Technical Solution Provider to the Mining and Resources Industries



*look for the Southern Cross...*